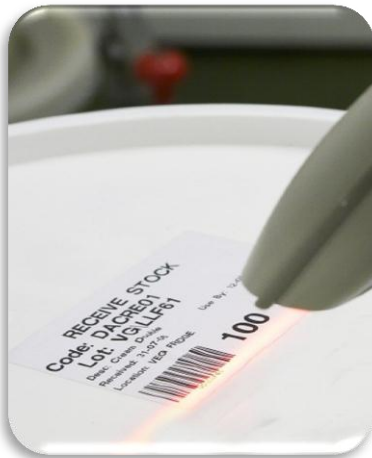




Prevent operator scaling errors and save bad batches with the **FB3000 Formula Weighing & Lot Traceability System** from SG Systems LLC.

The Ultimate in Control & Paperless Traceability guaranteed to satisfy customer traceability audits.

.....read on!!



At SG Systems, we understand that poor production control and lack of real-time factory floor data can reduce the profitability of a manufacturing business from between 2-6%.

That's why we have developed the most advanced Formula Weighing & Lot Traceability System available on the market today.

Available with an optional software interface – it can connect to your existing IT system. This interface empowers MRP / ERP with real-time information relating to inventory and production usage.

The Nema 4x FB3000 terminals network to a central server so your data has maximum security.



Applications Summary

- Bakery (Commercial & Retail)
- Beverages
- Chemical, Plastics, Polymers
- Detergents & Cleaning Agents
- Food Processing
- Pharmaceuticals
- Seasonings & Blended Ingredients



System Design Features

- Touch screen operation
- +/- Ingredient Tolerances
- Unlimited, ingredients, recipes and users
- 170+ Reports
- Label Printer & Scanner Options
- Inventory Control Software available
- Bulk Ingredient Control Options



Available with many options designed to meet the needs of a broad range of manufacturers, our principle modules include:

Inventory Management (optional)

Receive, move, withdraw, quarantine and label inbound inventory.

Allocate finished batches to sales orders, pick stock, label pallets and shipping.

Production Planning

Create formulas from a central point, allocate default production areas, schedule production, assign inventory to quantities production.

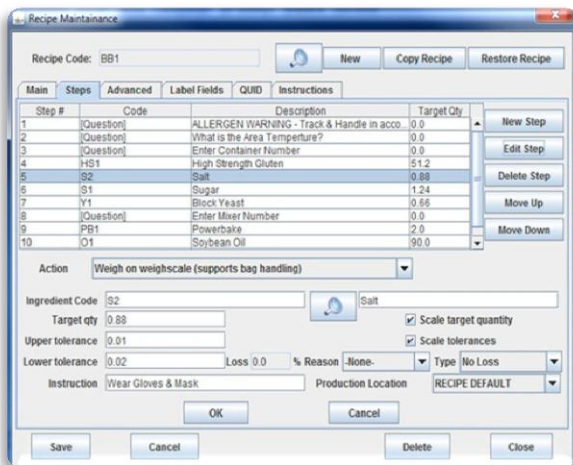
170 Traceability reports support all aspects of the production formulation process.

Formula Weighing Control

Schedule formulas to default areas. Operator's select from required batches and weigh each ingredient to a set target weight.

Scan received inventory labels to automatically deduct inventory in real time (perpetual inventory).

No more unaccountable losses!



Report Created: 9/21/2011 11:08:27 AM

Operator Shift

9/14/2011 to 9/21/2011 11:59:00 PM

Operator	0	Stuart Hunt	Target Qty	Net Qty	Achieved (%)	Time to Complete
Batch	Recipe					
1964	HDR1	Hot Dog Rolls (Full Batch)	3,750	3,760	99.47	00:02:31
1965	HDR1	Hot Dog Rolls (Full Batch)	3,750	3,770	99.74	00:02:33
1997	HDR1	Hot Dog Rolls (Full Batch)	53,750	53,770	99.99	21:29:02
1998	HDR1	Hot Dog Rolls (Full Batch)	53,750	53,770	99.98	00:00:50
1996	HDR1	Hot Dog Rolls (Full Batch)	1,000	0,190	19.00	00:00:55
Total			116,129	116,260	99.26	21:35:52

-- End of Report --

Report Created: 9/21/2011 11:15:21 AM

Ingredient Lot Number Report

Lot Number: LOT-101
Ingredient Code: S2
Description: Salt

Batch No.	Recipe Code	Description	Date/Time	Weight
1960	HDR1	Hot Dog Rolls (Full Batch)	9/13/2011 6:14:02 AM	0.87
1961	HDR1	Hot Dog Rolls (Full Batch)	9/13/2011 6:15:20 AM	0.87
1962	HDR1	Hot Dog Rolls (Full Batch)	9/13/2011 7:57:34 AM	0.87
1964	HDR1	Hot Dog Rolls (Full Batch)	9/14/2011 2:43:35 PM	0.76
1998	HDR1	Hot Dog Rolls (Full Batch)	9/20/2011 12:39:19 PM	0.88
1997	HDR1	Hot Dog Rolls (Full Batch)	9/20/2011 1:11:32 PM	0.88
1998	HDR1	Hot Dog Rolls (Full Batch)	9/21/2011 10:38:04 AM	0.88
Total				6.02

-- End of Report --

Report Created: 9/21/2011 11:08:34 AM

Recipe Batch Report

Mix Size: 100%

Hot Dog Rolls (Full Batch)

Operator: Stuart Hunt
Recipe: HDR1
Batch Number: 1995
Job Number: 060711-001

Prod. Location: any location
Start Date/Time: 9/20/2011 12:39:19 PM
End Date/Time: 9/20/2011 12:44:58 PM
Time to Complete: 0:02:34

Ingredient Code	Ingredient Description	Lot No. Qty & Loss	Net Quantity	Target Quantity
H51	High Strength Gluten	LOT-75 0.990 lb	0.990 lb	1,000 lb
S2	Salt	LOT-101 0.880 lb	0.880 lb	0.880 lb
S1	Sugar	LOT-42 0.120 lb LOT-227 1.120 lb	1.250 lb	1,240 lb
Y1	Block Yeast	LOT-231 0.650 lb	0.650 lb	0.650 lb
Target Weight:			3.77 lb	3,789 lb

-- Denotes a submix
^^ Denotes Operator Change
NW - Denotes Non Weighed Item

Question	Response	Operator Name
What is the Area Temperature?	30F - 39F	Stuart Hunt
Use a clean container	OK	Stuart Hunt
Place Lid onto container	OK	Stuart Hunt
Place Label on Container	OK	Stuart Hunt

Comprehensive Trace Reports

Over 170 comprehensive reports complement the world's most up to date traceability solution.

You can be certain to find data from critical production floor activity and be free of traceability 'grey areas' and assumptions.

Production & Usage

See who, what and when formulas were produced and how the operators perform.

Obtain real-time ingredient usage information to empower you with the data you need.

When 98% isn't good enough, you need FB3000 Traceability.

Inventory Management

Track an ingredient all the way through the receiving, batch production and shipping operations. Recalling ingredients takes seconds with FB3000 Traceability.

Gain visibility on supplier performance based on yields taken from real events on the production floor.

FB3000 - Complete confidence in Traceability & Formulation control!

SG Systems LLC
7239 Envoy Court
Dallas TX 75247

Tel : (214) 819 9570

www.sgsystemsusa.com